



**Water Monitoring Result at M5B - Central Cooling Water Intake Group
Mid-Flood Tide**

Date	Time	Weather Condition	Sampling Depth		Water Temperature			pH			Salinity			DO Saturation			DO			Turbidity			Suspended Solids	
			m		°C		-		ppt		%		mg/L		NTU		mg/L							
					Value	Average	Value	Average	Value	Average	Value	Average	Value	Average	Value	Average	Value	Average	Value	Average				
2/5/15	17:11	Sunny	Middle	3.5	25.40	25.40	25.45	8.21	8.21	8.21	31.63	31.63	31.60	74.6	73.4	72.6	5.11	5.03	4.97	2.73	2.73	2.62	5	5.00
	17:13		Middle	3.5	25.50	25.50		8.21	8.21		31.57	31.57		71.7	70.6		4.91	4.84		2.52	2.51		5	
4/5/15	18:45	Cloudy	Middle	3.5	26.50	26.50	26.45	8.19	8.19	8.19	30.39	30.39	30.39	84.0	84.1	83.9	5.70	5.71	5.70	3.23	3.17	3.14	3	3.00
	18:46		Middle	3.5	26.40	26.40		8.20	8.19		30.39	30.39		83.1	84.2		5.65	5.72		3.06	3.10		3	
6/5/15	20:12	Cloudy	Middle	3.0	26.40	26.40	26.45	8.11	8.11	8.12	30.92	30.92	30.92	83.6	84.6	84.2	5.64	5.72	5.69	2.82	2.80	2.72	3	3.00
	20:13		Middle	3.0	26.50	26.50		8.12	8.12		30.92	30.92		84.1	84.6		5.68	5.71		2.62	2.64		3	
8/5/15	22:39	Cloudy	Middle	3.5	26.70	26.70	26.75	8.09	8.09	8.10	29.96	29.96	29.96	78.0	78.7	78.3	5.28	5.29	5.29	4.63	4.72	4.39	7	8.00
	22:40		Middle	3.5	26.80	26.80		8.10	8.10		29.95	29.95		77.3	79.2		5.23	5.36		4.05	4.16		9	
11/5/15	10:01	Fine	Middle	3.5	26.00	26.00	26.10	8.17	8.17	8.18	29.86	29.86	29.86	69.4	69.1	69.6	4.75	4.73	4.75	2.58	2.59	2.60	3	3.00
	10:03		Middle	3.5	26.20	26.20		8.18	8.18		29.85	29.85		69.1	70.9		4.72	4.79		2.61	2.60		3	
13/5/15	11:37	Fine	Middle	3.0	25.70	25.70	25.70	8.21	8.21	8.21	30.81	30.81	30.81	71.6	71.7	71.4	4.90	4.91	4.89	3.20	3.16	3.16	4	3.50
	11:39		Middle	3.0	25.70	25.70		8.21	8.21		30.81	30.81		71.5	70.9		4.90	4.86		3.15	3.14		3	
15/5/15	15:35	Fine	Middle	2.5	26.90	26.90	26.95	8.17	8.17	8.17	29.84	29.84	29.84	70.8	72.0	72.2	4.75	4.86	4.86	7.29	7.15	7.20	22	<u>22.00</u>
	15:37		Middle	2.5	27.00	27.00		8.16	8.16		29.83	29.83		72.9	72.9		4.91	4.92		7.18	7.19		22	
18/5/15	18:55	Cloudy	Middle	3.0	26.70	26.70	26.70	7.96	7.96	7.98	28.96	28.96	28.96	73.0	75.8	75.4	5.00	5.16	5.14	5.80	5.77	5.72	6	7.00
	18:56		Middle	3.0	26.70	26.70		7.99	7.99		28.95	28.95		76.1	76.6		5.18	5.21		5.62	5.70		8	
20/5/15	-	Amber Rainstorm	Middle	-	-	-	#DIV/0!	-	-	#DIV/0!	-	-	#DIV/0!	-	-	#DIV/0!	-	-	#DIV/0!	-	-	#DIV/0!	-	#DIV/0!
	-		Middle	-	-	-	#DIV/0!	-	-	#DIV/0!	-	-	#DIV/0!	-	-	#DIV/0!	-	-	#DIV/0!	-	-	#DIV/0!	-	#DIV/0!
22/5/15	22:07	Cloudy	Middle	3.0	24.00	24.00	24.00	8.10	8.10	8.11	31.22	31.22	31.22	89.5	90.5	89.7	6.30	6.37	6.32	4.66	4.40	4.40	4	5.00
	22:08		Middle	3.0	24.00	24.00		8.11	8.11		31.22	31.22		88.2	90.7		6.21	6.39		4.52	4.02		6	
26/5/15	2:52	Cloudy	Middle	3.5	26.70	26.70	26.75	8.05	8.05	8.06	28.58	28.58	28.58	76.0	76.9	76.5	5.19	5.25	5.22	3.04	2.77	2.78	<2	2.00
	2:53		Middle	3.5	26.80	26.80		8.07	8.07		28.58	28.58		77.1	76.1		5.26	5.19		2.68	2.61		2	
28/5/15	19:15	Cloudy	Middle	3.0	28.00	28.00	28.00	8.16	8.16	8.16	24.30	24.30	24.30	82.7	85.6	83.5	5.62	5.82	5.67	2.50	2.03	2.22	2	3.00
	19:16		Middle	3.0	28.00	28.00		8.16	8.16		24.30	24.30		83.4	82.1		5.67	5.58		2.19	2.17		4	
30/5/15	15:10	Fine	Middle	3.0	30.20	30.20	30.40	8.41	8.41	8.44	24.11	24.11	24.10	79.6	79.9	79.1	5.23	5.25	5.20	4.70	4.61	4.61	5	4.50
	15:12		Middle	3.0	30.60	30.60		8.46	8.46		24.08	24.08		78.4	78.4		5.16	5.15		4.56	4.56		4	

Remarks:
 Single underline denotes exceedance over Action Level.
 Double underline denotes exceedance over Limit Level.
 Due to the hoisting of Amber Rainstorm Warning Signal, the water quality monitoring on 11 May 2015 during ebb tide and 20 May 2015 during flood tide were cancelled.



**Water Monitoring Result at M5B - Central Colling Water Intake Group
Mid-Ebb Tide**

Date	Time	Weather Condition	Sampling Depth		Water Temperature			pH			Salinity			DO Saturation		DO		Turbidity		Suspended Solids				
					°C		-		ppt		%		mg/L		NTU		mg/L							
					Value	Average	Value	Average	Value	Average	Value	Average	Value	Average	Value	Average	Value	Average	Value	Average				
2/5/15	10:45	Fine	Middle	3.0	25.70	25.70	25.80	8.11	8.11	8.12	32.08	32.08	32.08	83.6	86.0	84.9	5.69	5.93	5.79	2.30	2.14	2.19	5	5.00
	10:47		Middle	3.0	25.90	25.90		8.12	8.12		32.07	32.07		84.5	85.3		5.73	5.79		2.16	2.17		5	
4/5/15	11:25	Fine	Middle	3.0	26.60	26.60	26.65	8.13	8.13	8.14	30.88	30.88	30.90	64.7	61.9	61.9	4.39	4.17	4.19	1.99	1.82	1.88	3	3.00
	11:27		Middle	3.0	26.70	26.70		8.15	8.15		30.91	30.91		61.0	60.0		4.11	4.09		1.80	1.89		3	
6/5/15	14:18	Sunny	Middle	3.5	26.20	26.20	26.20	8.18	8.18	8.19	30.92	30.92	30.92	73.7	73.9	74.1	4.84	4.86	4.87	2.85	2.99	2.90	5	5.50
	14:20		Middle	3.5	26.20	26.20		8.19	8.19		30.91	30.91		74.4	74.4		4.89	4.89		2.87	2.87		6	
8/5/15	14:20	Cloudy	Middle	3.5	26.80	26.80	26.70	8.14	8.14	8.16	29.72	29.72	29.73	70.3	70.7	70.7	4.79	4.81	4.81	3.31	3.37	3.42	3	2.50
	14:22		Middle	3.5	26.60	26.60		8.18	8.18		29.74	29.74		70.7	70.9		4.81	4.82		3.52	3.47		2	
11/5/15	-	Amber Rainstorm	Middle	-	-	-	#DIV/0!	-	-	#DIV/0!	-	-	#DIV/0!	-	-	#DIV/0!	-	-	#DIV/0!	-	-	#DIV/0!	-	#DIV/0!
	-		Middle	-	-	-		-	-		-	-		-	-		-	-		-	-		-	
13/5/15	20:00	Cloudy	Middle	3.0	25.80	25.80	25.80	8.25	8.25	8.25	30.92	30.92	30.92	92.6	93.9	93.2	6.33	6.41	6.37	3.27	3.25	3.28	6	6.00
	20:01		Middle	3.0	25.80	25.80		8.25	8.25		30.92	30.92		93.6	92.7		6.39	6.33		3.16	3.42		6	
15/5/15	11:21	Fine	Middle	3.0	26.90	26.90	26.90	8.16	8.16	8.17	29.99	29.99	29.99	71.3	71.7	71.3	4.81	4.83	4.80	5.29	5.22	5.26	4	4.50
	11:23		Middle	3.0	26.90	26.90		8.17	8.17		29.99	29.99		71.0	71.0		4.78	4.78		5.22	5.31		5	
18/5/15	14:00	Cloudy	Middle	3.0	26.60	26.60	26.70	8.09	8.09	8.12	29.15	29.15	29.15	69.4	70.3	69.4	4.72	4.78	4.72	4.32	4.32	4.31	5	5.00
	14:02		Middle	3.0	26.80	26.80		8.15	8.15		29.15	29.15		67.8	70.0		4.61	4.75		4.30	4.29		5	
20/5/15	13:30	Cloudy	Middle	3.0	26.60	26.60	26.65	8.11	8.11	8.12	27.42	27.42	27.42	69.1	69.7	69.0	4.75	4.79	4.74	5.98	5.92	5.93	5	5.00
	13:32		Middle	3.0	26.70	26.70		8.13	8.13		27.42	27.42		68.8	68.2		4.73	4.69		5.91	5.89		5	
22/5/15	14:35	Cloudy	Middle	3.0	24.40	24.40	24.40	8.23	8.23	8.24	31.34	31.34	31.34	72.0	72.1	71.8	5.03	5.04	5.02	5.29	5.31	5.34	5	6.00
	14:37		Middle	3.0	24.40	24.40		8.24	8.24		31.34	31.34		71.7	71.4		5.01	4.99		5.35	5.40		7	
26/5/15	16:40	Cloudy	Middle	3.0	26.30	26.30	26.30	8.10	8.10	8.14	26.34	26.34	26.35	71.4	70.3	70.8	4.97	4.89	4.93	3.98	3.88	3.87	5	5.00
	16:42		Middle	3.0	26.30	26.30		8.17	8.17		26.35	26.35		70.8	70.7		4.92	4.92		3.88	3.75		5	
28/5/15	8:40	Fine	Middle	3.0	26.90	26.90	26.95	8.17	8.17	8.17	25.26	25.26	25.26	73.8	74.3	74.3	5.11	5.14	5.15	3.61	3.63	3.59	<2	<2
	8:42		Middle	3.0	27.00	27.00		8.17	8.17		25.26	25.26		74.8	74.4		5.18	5.15		3.58	3.55		<2	
30/5/15	9:56	Fine	Middle	3.5	28.40	28.40	28.45	8.23	8.23	8.24	24.99	24.99	24.99	76.5	76.7	76.6	5.15	5.18	5.17	3.64	3.56	3.48	3	3.50
	9:58		Middle	3.5	28.50	28.50		8.24	8.24		24.99	24.99		77.0	76.2		5.20	5.14		3.38	3.35		4	

Remarks:
 Single underline denotes exceedance over Action Level.
 Double underline denotes exceedance over Limit Level.
 Due to the hoisting of Amber Rainstorm Warning Signal, the water quality monitoring on 11 May 2015 during ebb tide and 20 May 2015 during flood tide were cancelled.



**Water Monitoring Result at M5B - Central Cooling Water Intake Group
Mid-Flood Tide**

Date	Time	Weather Condition	Sampling Depth		Water Temperature		pH			Salinity		DO Saturation		DO		Turbidity		Suspended Solids						
					°C		-		ppt		%		mg/L		NTU		mg/L							
			m	Value	Average	Value	Average	Value	Average	Value	Average	Value	Average	Value	Average	Value	Average	Value	Average					
1/6/15	16:54	Cloudy	Middle	3.5	27.50	27.50	27.35	8.37	8.37	8.38	26.87	26.87	26.90	70.8	70.8	70.1	4.84	4.84	4.79	3.51	3.45	3.47	4	4.00
	16:56		Middle	3.5	27.20	27.20		8.39	8.39		26.92	26.92		69.6	69.3		4.75	4.74		3.43	3.50		4	
3/6/15	20:24	Cloudy	Middle	3.0	27.50	27.50	27.55	8.18	8.18	8.18	27.69	27.69	27.69	71.8	71.1	71.0	4.86	4.81	4.81	3.84	3.70	3.67	4	4.00
	20:25		Middle	3.0	27.60	27.60		8.18	8.18		27.69	27.69		70.5	70.7		4.77	4.78		3.60	3.53		4	
5/6/15	21:24	Cloudy	Middle	3.5	26.50	26.50	26.60	8.08	8.08	8.09	28.92	28.92	28.92	71.6	71.9	71.6	4.89	4.91	4.88	2.82	3.01	2.85	2	2.00
	21:25		Middle	3.5	26.70	26.70		8.09	8.09		28.92	28.92		71.6	71.1		4.88	4.85		2.88	2.68		2	
8/6/15	9:20	Fine	Middle	3.5	26.70	26.70	26.80	8.13	8.13	8.15	29.03	29.03	29.03	70.3	71.4	71.4	4.78	4.85	4.85	2.71	2.66	2.67	2	2.00
	9:22		Middle	3.5	26.90	26.90		8.16	8.16		29.03	29.03		71.8	72.1		4.87	4.89		2.65	2.64		2	
10/6/15	11:50	Fine	Middle	3.0	28.20	28.20	28.30	8.30	8.30	8.31	27.22	27.22	27.22	74.3	74.5	73.7	4.97	4.99	4.94	3.75	3.72	3.73	4	4.00
	11:52		Middle	3.0	28.40	28.40		8.31	8.31		27.21	27.21		73.4	72.7		4.91	4.87		3.72	3.73		4	
12/6/15	14:47	Fine	Middle	3.5	27.60	27.60	27.70	8.25	8.25	8.27	28.10	28.10	28.07	65.0	63.2	62.7	4.37	4.25	<u>4.21</u>	3.34	3.33	3.36	4	3.00
	14:49		Middle	3.5	27.80	27.80		8.28	8.28		28.04	28.04		62.2	60.4		4.16	4.06		3.35	3.42		2	
15/6/15	18:25	Fine	Middle	3.0	26.90	26.90	27.05	8.13	8.13	8.12	30.53	30.53	30.53	73.8	73.1	73.8	4.79	4.76	4.80	4.34	4.31	4.28	5	5.00
	18:27		Middle	3.0	27.20	27.20		8.11	8.11		30.53	30.53		74.1	74.3		4.82	4.83		4.23	4.22		5	
17/6/15	21:44	Cloudy	Middle	3.5	27.30	27.30	27.35	8.16	8.16	8.17	30.13	30.13	30.13	77.0	77.7	77.3	5.14	5.19	5.16	5.23	5.14	5.14	7	6.50
	21:45		Middle	3.5	27.40	27.40		8.17	8.17		30.13	30.13		77.9	76.4		5.19	5.10		5.10	5.08		6	
19/6/15	22:56	Fine	Middle	3.0	27.10	27.10	27.03	8.04	8.04	8.07	28.97	28.97	28.97	76.7	78.5	77.5	5.20	5.32	5.25	2.59	2.45	2.42	5	5.00
	22:57		Middle	3.0	26.90	27.00		8.09	8.09		28.96	28.96		77.4	77.2		5.25	5.24		2.33	2.31		5	
22/6/15	10:00	Cloudy	Middle	3.5	27.10	27.10	27.15	8.33	8.33	8.34	26.54	26.54	26.55	44.3	43.8	43.6	3.03	3.00	<u>2.98</u>	2.23	2.25	2.24	4	3.50
	10:02		Middle	3.5	27.20	27.20		8.34	8.34		26.56	26.56		43.2	43.0		2.96	2.94		2.26	2.21		3	
25/6/15	0:51	Cloudy	Middle	3.0	27.70	27.70	27.70	8.33	8.33	8.34	25.11	25.11	25.11	81.3	81.9	81.1	5.56	5.60	5.54	2.54	2.57	2.53	3	3.00
	0:52		Middle	3.0	27.70	27.70		8.34	8.34		25.11	25.11		81.1	80.0		5.55	5.46		2.51	2.48		3	
27/6/15	0:08	Cloudy	Middle	3.0	28.20	28.20	28.25	8.34	8.34	8.35	23.64	23.64	23.64	82.3	84.1	82.0	5.62	5.75	5.61	2.46	2.52	2.42	8	8.50
	0:09		Middle	3.0	28.30	28.30		8.35	8.35		23.64	23.64		81.3	80.3		5.56	5.49		2.40	2.31		9	
29/6/15	16:25	Fine	Middle	3.5	29.60	29.60	29.75	8.40	8.40	8.40	24.41	24.41	24.41	91.3	91.8	90.9	6.06	6.09	6.03	3.53	3.52	3.52	6	6.00
	16:27		Middle	3.5	29.90	29.90		8.40	8.40		24.40	24.40		89.8	90.5		5.96	6.00		3.52	3.51		6	

Remarks:
Single underline denotes exceedance over Action Level.
Double underline denotes exceedance over Limit Level.



**Water Monitoring Result at M5B - Central Colling Water Intake Group
Mid-Ebb Tide**

Date	Time	Weather Condition	Sampling Depth		Water Temperature		pH		Salinity		DO Saturation		DO		Turbidity		Suspended Solids							
					°C		-		ppt		%		mg/L		NTU		mg/L							
					Value	Average	Value	Average	Value	Average	Value	Average	Value	Average	Value	Average	Value	Average						
1/6/15	10:41	Cloudy	Middle	3.5	27.40	27.40	27.40	8.27	8.27	8.30	27.48	27.48	27.48	58.4	58.3	59.5	3.96	3.96	<u>4.04</u>	4.92	4.92	4.92	5	5.50
	10:43		Middle	3.5	27.40	27.40		8.32	8.32		27.47	27.47		60.6	60.8		4.11	4.13		4.92	4.91		6	
3/6/15	10:40	Fine	Middle	3.5	27.20	27.20	27.25	8.12	8.12	8.16	28.03	28.03	28.03	68.5	68.5	68.1	4.64	4.64	4.61	2.75	2.73	2.73	2	2.00
	10:42		Middle	3.5	27.30	27.30		8.19	8.19		28.02	28.02		67.9	67.5		4.60	4.57		2.72	2.71		2	
5/6/15	11:30	Cloudy	Middle	3.5	26.90	26.90	27.05	8.17	8.17	8.17	30.27	30.27	30.27	71.0	70.6	70.7	4.76	4.74	4.74	2.49	4.46	2.97	4	3.50
	11:32		Middle	3.5	27.20	27.20		8.17	8.17		30.27	30.27		70.4	70.6		4.73	4.74		2.46	2.46		3	
8/6/15	16:35	Fine	Middle	3.5	27.80	27.80	27.85	8.19	8.19	8.20	28.88	28.88	28.87	65.8	66.2	65.4	4.40	4.42	<u>4.36</u>	3.53	3.49	3.50	3	3.50
	16:37		Middle	3.5	27.90	27.90		8.21	8.21		28.85	28.85		65.4	64.0		4.37	4.26		3.49	3.50		4	
10/6/15	16:43	Fine	Middle	3.5	27.60	27.60	27.65	8.31	8.31	8.34	26.98	26.98	26.98	66.2	66.0	65.1	4.48	4.47	<u>4.41</u>	2.93	2.99	2.92	7	7.00
	16:45		Middle	3.5	27.70	27.70		8.37	8.37		26.98	26.98		65.1	63.0		4.41	4.27		2.87	2.87		7	
12/6/15	8:40	Fine	Middle	3.0	27.40	27.40	27.50	8.26	8.26	8.28	25.46	25.46	25.45	69.3	71.3	70.8	4.75	4.88	4.85	3.70	3.72	3.74	2	2.00
	8:42		Middle	3.0	27.60	27.60		8.30	8.30		25.44	25.44		71.3	71.4		4.89	4.89		3.76	3.77		2	
15/6/15	10:45	Fine	Middle	3.0	27.30	27.30	27.35	8.25	8.25	8.26	28.23	28.23	28.22	74.2	74.4	74.3	5.01	5.03	5.02	2.51	2.64	2.76	2	3.00
	10:47		Middle	3.0	27.40	27.40		8.26	8.26		28.21	28.21		73.9	74.6		5.00	5.04		2.92	2.98		4	
17/6/15	11:33	Fine	Middle	3.5	27.50	27.50	27.65	8.23	8.23	8.24	29.73	29.73	29.73	70.8	71.9	70.7	4.72	4.79	4.71	2.70	2.70	2.71	4	4.00
	11:35		Middle	3.5	27.80	27.80		8.25	8.25		29.72	29.73		70.4	69.6		4.69	4.63		2.70	2.72		4	
19/6/15	16:09	Fine	Middle	3.5	28.90	28.90	29.00	8.18	8.18	8.21	28.50	28.50	28.48	60.9	60.4	60.3	4.01	3.97	<u>3.96</u>	2.87	2.65	2.70	4	3.50
	16:11		Middle	3.5	29.10	29.10		8.23	8.23		28.46	28.46		59.8	60.0		3.93	3.94		2.64	2.65		3	
22/6/15	15:44	Fine	Middle	3.5	28.50	28.50	28.55	8.42	8.42	8.44	25.32	25.32	25.31	65.7	65.3	64.5	4.43	4.40	<u>4.35</u>	2.27	2.27	2.32	5	4.50
	15:46		Middle	3.5	28.60	28.60		8.46	8.46		25.30	25.30		64.4	62.7		4.32	4.23		2.36	2.36		4	
24/6/15	15:35	Cloudy	Middle	3.0	28.00	28.00	28.10	8.44	8.44	8.45	25.14	25.14	25.14	83.9	85.6	82.9	5.70	5.82	5.63	1.75	1.72	1.71	<2	2.00
	15:37		Middle	3.0	28.20	28.20		8.46	8.46		25.14	25.14		81.4	80.5		5.53	5.47		1.70	1.67		2	
26/6/15	21:30	Cloudy	Middle	3.0	28.30	28.30	28.35	8.37	8.37	8.37	24.01	24.01	24.01	82.5	84.0	84.2	5.61	5.72	5.73	3.31	3.47	3.50	8	8.00
	21:31		Middle	3.0	28.40	28.40		8.37	8.37		24.01	24.01		85.4	85.0		5.81	5.79		3.65	3.57		8	
29/6/15	11:20	Fine	Middle	3.0	29.40	29.40	29.45	8.43	8.43	8.45	23.11	23.11	23.11	88.8	88.2	88.4	5.96	5.92	5.93	3.15	3.04	3.12	8	8.00
	11:22		Middle	3.0	29.50	29.50		8.46	8.46		23.11	23.11		89.1	87.4		5.98	5.87		3.09	3.20		8	

Remarks:
Single underline denotes exceedance over Action Level.
Double underline denotes exceedance over Limit Level.



**Water Monitoring Result at M5B - Central Cooling Water Intake Group
Mid-Flood Tide**

Date	Time	Weather Condition	Sampling Depth		Water Temperature			pH			Salinity		DO Saturation		DO		Turbidity		Suspended Solids					
					°C			-			ppt		%		mg/L		NTU		mg/L					
					Value	Average		Value	Average		Value	Average	Value	Average	Value	Average	Value	Average	Value	Average				
2/7/15	19:43	Fine	Middle	3.0	28.10	28.10	28.15	8.32	8.32	8.33	27.27	27.27	27.28	82.4	84.4	82.5	5.51	5.64	5.52	3.28	3.04	3.14	5	5.00
	19:44		Middle	3.0	28.20	28.20		8.33	8.33		27.28	27.28		82.0	81.3		5.48	5.43		3.09	3.14		5	
4/7/15	21:00	Fine	Middle	2.5	28.10	28.10	28.10	8.13	8.13	8.14	29.47	29.47	29.47	73.0	75.2	73.5	4.83	4.97	4.86	8.72	8.74	8.45	4	4.00
	21:01		Middle	3.0	28.10	28.10		8.14	8.14		29.47	29.47		73.1	72.7		4.84	4.81		8.23	8.10		4	
6/7/15	0:48	Cloudy	Middle	3.5	25.92	5.92	20.93	7.57	7.57	7.57	30.22	30.22	30.22	94.1	94.0	93.9	6.44	6.44	6.43	3.70	3.67	3.62	3	2.50
	0:49		Middle	3.5	25.94	25.94		7.57	7.57		30.21	30.21		93.8	93.6		6.42	6.40		3.49	3.61		2	
8/7/15	10:12	Fine	Middle	3.5	26.00	26.00	26.05	8.21	8.21	8.22	32.07	32.07	32.05	74.0	74.0	74.0	5.01	5.01	5.01	3.37	3.35	3.44	4	3.50
	10:14		Middle	3.5	26.10	26.10		8.23	8.23		32.02	32.02		74.3	73.8		5.03	4.99		3.44	3.59		3	
10/7/15	13:42	Fine	Middle	3.5	26.80	26.80	27.05	8.24	8.24	8.24	32.48	32.48	32.49	84.7	81.4	82.7	5.62	5.40	5.48	3.22	3.21	3.22	7	7.50
	13:44		Middle	3.5	27.30	27.30		8.24	8.24		32.49	32.49		80.4	84.2		5.33	5.57		3.22	3.21		8	
13/7/15	16:29	Fine	Middle	3.0	27.80	27.80	28.00	8.20	8.20	8.21	31.63	31.63	31.63	78.5	81.2	80.7	5.15	5.34	5.30	8.62	8.49	8.53	8	8.50
	16:31		Middle	3.0	28.20	28.20		8.21	8.21		31.62	31.62		81.3	81.7		5.33	5.38		8.49	8.51		9	
15/7/15	20:21	Cloudy	Middle	3.5	27.51	27.51	27.53	7.60	7.60	7.60	29.30	29.30	29.29	94.0	94.1	93.9	6.29	6.29	6.28	7.34	7.37	7.53	5	5.50
	20:22		Middle	3.5	27.55	27.55		7.60	7.60		29.27	29.27		93.8	93.6		6.28	6.26		7.97	7.42		6	
17/7/15	20:35	Cloudy	Middle	3.0	27.56	27.56	27.56	7.58	7.58	7.58	30.48	30.48	30.48	91.2	91.0	91.1	6.07	6.05	6.06	5.20	5.36	5.26	5	5.50
	20:36		Middle	3.0	27.56	27.56		7.58	7.58		30.48	30.48		91.1	91.1		6.06	6.06		5.29	5.17		6	
20/7/15	8:15	Cloudy	Middle	3.5	27.00	27.00	27.05	8.13	8.13	8.13	27.89	27.89	27.89	69.3	69.7	69.6	4.64	4.66	4.66	6.58	6.29	6.32	6	5.50
	8:17		Middle	3.5	27.10	27.10		8.12	8.12		27.88	27.88		69.8	69.7		4.66	4.66		6.19	6.20		5	
22/7/15	-	Amber Rainstorm	Middle	-	-	-	#DIV/0!	-	-	#DIV/0!	-	-	#DIV/0!	-	-	#DIV/0!	-	-	#DIV/0!	-	-	#DIV/0!	-	#DIV/0!
	-		Middle	-	-	-		-	-		-	-		-	-		-	-		-	-		-	
25/7/15	3:21	Cloudy	Middle	3.5	27.06	27.06	27.07	7.52	7.52	7.53	25.40	25.41	25.45	87.0	86.5	86.5	6.01	5.97	5.97	3.30	3.36	3.32	4	3.50
	3:22		Middle	3.5	27.07	27.07		7.53	7.53		25.49	25.49		86.3	86.1		5.95	5.93		3.32	3.28		3	
28/7/15	15:47	Fine	Middle	3.5	28.30	28.30	28.40	8.20	8.20	8.20	25.69	25.69	25.68	71.8	72.1	71.3	4.84	4.86	4.81	2.51	2.45	2.49	6	5.00
	15:49		Middle	3.5	28.50	28.50		8.20	8.20		25.67	25.67		71.4	70.0		4.81	4.72		2.48	2.50		4	
30/7/15	16:31	Cloudy	Middle	3.5	27.10	27.10	27.15	8.32	8.32	8.35	26.73	26.73	26.73	84.7	83.1	83.0	5.80	5.69	5.68	3.36	3.36	3.40	5	6.00
	16:33		Middle	3.5	27.20	27.20		8.38	8.38		26.72	26.72		82.2	81.9		5.62	5.60		3.43	3.44		7	

Remarks:
 Single underline denotes exceedance over Action Level.
 Double underline denotes exceedance over Limit Level.
 Due to the hoisting of Amber Rainstorm Warning Signal, the water quality monitoring event in 22 July 2015 during flood tide and ebb tide were cancelled.



**Water Monitoring Result at M5B - Central Colling Water Intake Group
Mid-Ebb Tide**

Date	Time	Weather Condition	Sampling Depth		Water Temperature			pH			Salinity			DO Saturation			DO			Turbidity			Suspended Solids	
					°C		-		ppt		%		mg/L		NTU		mg/L							
					Value	Average	Value	Average	Value	Average	Value	Average	Value	Average	Value	Average	Value	Average	Value	Average				
27/7/15	11:35	Fine	Middle	3.5	28.90	28.90	29.00	8.36	8.36	8.38	26.57	26.57	26.58	86.5	87.3	87.2	5.75	5.80	5.79	3.75	3.75	3.75	5	5.50
	11:37		Middle	3.5	29.10	29.10		8.40	8.40		26.58	26.58		87.6	87.2		5.82	5.79		3.77	3.74		6	
4/7/15	15:07	Fine	Middle	3.5	28.10	28.10	28.15	7.93	7.93	8.03	29.05	29.05	29.05	75.6	74.4	74.9	5.03	4.95	4.98	2.74	2.74	2.74	2	2.50
	15:09		Middle	3.5	28.20	28.20		8.12	8.12		29.04	29.04		74.5	75.1		4.95	4.99		2.75	2.74		3	
6/7/15	13:51	Fine	Middle	3.5	27.20	27.20	27.30	8.13	8.13	8.17	30.90	30.90	30.90	82.0	82.0	81.1	5.47	5.46	5.40	2.76	2.75	2.75	3	3.00
	13:53		Middle	3.5	27.40	27.40		8.20	8.20		30.90	30.90		80.1	80.1		5.33	5.34		2.75	2.75		3	
8/7/15	16:32	Fine	Middle	3.5	26.50	26.50	26.55	8.12	8.12	8.18	32.25	32.25	32.24	80.9	79.5	79.0	5.43	5.34	5.30	2.43	2.63	2.57	3	3.00
	16:34		Middle	3.5	26.60	26.60		8.23	8.23		32.23	32.23		78.1	77.4		5.24	5.19		2.59	2.63		3	
10/7/15	20:16	Cloudy	Middle	3.0	26.92	26.92	26.95	7.69	7.68	7.68	31.93	31.93	31.93	97.0	97.0	96.8	6.46	6.46	6.45	2.13	2.09	2.14	5	5.50
	20:17		Middle	3.0	26.97	26.97		7.68	7.68		31.93	31.93		96.8	96.5		6.44	6.42		2.18	2.16		6	
13/7/15	9:52	Fine	Middle	3.5	27.70	27.70	27.75	8.17	8.17	8.19	31.95	31.95	31.94	77.2	75.3	75.7	5.08	4.95	4.98	3.20	3.35	3.32	2	2.00
	9:54		Middle	3.5	27.80	27.80		8.21	8.21		31.92	31.92		75.2	74.9		4.95	4.95		3.39	3.35		2	
15/7/15	10:52	Fine	Middle	3.5	27.60	27.60	27.65	8.22	8.22	8.22	31.62	31.62	31.64	71.4	71.6	72.1	4.73	4.75	4.79	3.26	3.35	3.27	3	3.00
	10:54		Middle	3.5	27.70	27.70		8.22	8.22		31.66	31.66		72.5	72.8		4.82	4.84		3.32	3.15		3	
17/7/15	12:16	Fine	Middle	3.5	27.30	27.30	27.40	8.22	8.22	8.23	31.20	31.20	31.20	84.4	83.4	83.0	5.61	5.54	5.51	3.74	3.75	3.74	3	3.50
	12:18		Middle	3.5	27.50	27.50		8.24	8.24		31.19	31.19		81.2	82.9		5.39	5.50		3.74	3.74		4	
20/7/15	13:50	Cloudy	Middle	3.5	26.70	26.70	26.75	8.30	8.30	8.30	29.92	29.92	29.92	82.9	82.7	82.4	5.61	5.57	5.57	6.13	6.13	6.14	6	6.00
	13:52		Middle	3.5	26.80	26.80		8.30	8.30		29.92	29.92		81.5	82.4		5.51	5.57		6.13	6.15		6	
22/7/15	-	Amber Rainstorm	Middle	-	-	-	#DIV/0!	-	-	#DIV/0!	-	-	#DIV/0!	-	-	#DIV/0!	-	-	#DIV/0!	-	-	#DIV/0!	-	#DIV/0!
	-		Middle	-	-	-		-	-		-	-		-	-		-	-		-	-		-	
25/7/15	7:50	Cloudy	Middle	3.5	27.20	27.20	27.20	7.85	7.85	7.90	25.21	25.21	25.21	80.9	80.2	79.2	5.58	5.53	5.46	5.38	5.89	5.73	4	3.00
	7:52		Middle	3.5	27.20	27.20		7.94	7.94		25.21	25.21		78.7	76.8		5.42	5.29		5.90	5.75		2	
28/7/15	10:10	Fine	Middle	3.5	27.80	27.80	27.85	8.14	8.14	8.15	25.56	25.56	25.56	85.2	85.2	85.2	5.80	5.80	5.80	1.76	1.76	1.76	4	5.00
	10:12		Middle	3.5	27.90	27.90		8.15	8.15		25.56	25.56		85.4	85.0		5.81	5.78		1.76	1.76		6	
30/7/15	10:30	Fine	Middle	3.5	27.50	27.50	27.30	8.12	8.12	8.18	27.21	27.21	27.27	73.5	77.1	75.5	5.02	5.27	5.16	3.21	3.21	3.15	5	5.50
	10:32		Middle	3.5	27.10	27.10		8.23	8.23		27.32	27.32		76.2	75.0		5.21	5.13		3.14	3.03		6	

Remarks:
 Single underline denotes exceedance over Action Level.
 Double underline denotes exceedance over Limit Level.
 Due to the hoisting of Amber Rainstorm Warning Signal, the water quality monitoring event in 22 July 2015 during flood tide and ebb tide were cancelled.



**Water Monitoring Result at Culvert J - Reference Station
Mid-Flood Tide**

Date	Time	Weather Condition	Sampling Depth		Water Temperature			pH			Salinity			DO Saturation			DO			Turbidity			Suspended Solids	
					°C			-			ppt			%			mg/L			NTU			mg/L	
			m	Value	Average	Value	Average	Value	Average	Value	Average	Value	Average	Value	Average	Value	Average	Value	Average	Value	Average	Value	Average	Value
2/5/15	17:07	Sunny	Middle	2.5	25.60	25.60	25.60	8.20	8.20	8.21	29.76	29.76	29.76	76.7	74.5	73.6	5.30	5.14	5.07	5.54	5.58	5.50	8	8.00
	17:09		Middle	2.5	25.60	25.60		8.22	8.22		29.75	29.75		72.2	71.0		4.95	4.90		5.47	5.41		8	
4/5/15	18:53	Cloudy	Middle	3.0	26.60	26.60	26.60	8.10	8.10	8.07	26.22	26.22	26.22	37.4	38.6	37.8	2.59	2.68	2.63	11.55	11.46	11.35	11	10.00
	18:54		Middle	3.0	26.60	26.60		8.03	8.04		26.22	26.22		38.0	37.3		2.64	2.59		11.30	11.07		9	
6/5/15	20:22	Cloudy	Middle	2.5	26.50	26.50	26.55	8.11	8.11	8.10	28.63	28.63	28.63	63.0	64.0	63.5	4.30	4.37	4.34	9.82	9.72	9.78	8	7.50
	20:23		Middle	2.5	26.60	26.60		8.08	8.08		28.63	28.63		63.3	63.7		4.32	4.35		9.95	9.64		7	
8/5/15	22:50	Cloudy	Middle	3.0	26.80	26.80	26.85	8.09	8.09	8.05	27.12	27.12	27.11	54.4	55.4	54.3	3.74	3.81	3.73	8.75	8.51	8.47	10	9.50
	22:51		Middle	3.0	26.90	26.90		8.00	8.00		27.10	27.10		53.4	54.0		3.66	3.70		8.23	8.39		9	
11/5/15	9:56	Fine	Middle	3.0	26.30	26.30	26.35	8.13	8.13	8.13	29.12	29.12	29.12	63.2	63.6	63.6	4.35	4.37	4.37	5.89	5.89	5.90	6	6.00
	9:58		Middle	3.0	26.40	26.40		8.13	8.13		29.12	29.12		63.9	63.6		4.40	4.36		5.90	5.91		6	
13/5/15	11:30	Fine	Middle	2.5	25.80	25.80	25.80	8.19	8.19	8.19	30.32	30.32	30.32	66.7	67.3	66.9	4.51	4.62	4.54	3.80	3.76	3.77	4	4.00
	11:32		Middle	2.5	25.80	25.80		8.19	8.19		30.32	30.32		66.9	66.8		4.52	4.52		3.75	3.75		4	
15/5/15	15:30	Fine	Middle	2.5	27.70	27.70	27.80	8.12	8.12	8.12	29.06	29.06	29.06	62.9	62.7	62.4	4.20	4.18	4.16	8.31	8.30	8.30	10	10.00
	15:32		Middle	2.5	27.90	27.90		8.12	8.12		29.06	29.06		61.7	62.2		4.12	4.15		8.29	8.29		10	
18/5/15	19:11	Cloudy	Middle	2.5	26.60	26.60	26.65	8.05	8.05	8.04	25.14	25.14	25.14	61.5	62.2	62.2	4.28	4.32	4.32	12.98	12.96	12.99	11	11.50
	19:12		Middle	2.5	26.70	26.70		8.03	8.03		25.14	25.14		62.4	62.6		4.34	4.35		12.94	13.07		12	
20/5/15	-	Amber Rainstorm	Middle	-	-	-	#DIV/0!	-	-	#DIV/0!	-	-	#DIV/0!	-	-	#DIV/0!	-	-	#DIV/0!	-	-	#DIV/0!	-	#DIV/0!
	-		Middle	-	-	-		-	-		-	-		-	-		-	-		-	-		-	
22/5/15	22:15	Cloudy	Middle	2.5	23.90	23.90	23.90	8.10	8.10	8.06	26.85	26.85	26.85	54.4	55.4	55.3	3.93	4.00	4.00	8.25	7.96	7.91	7	6.50
	22:16		Middle	2.5	23.90	23.90		8.02	8.02		26.85	26.85		55.5	55.9		4.01	4.04		7.87	7.57		6	
26/5/15	3:01	Cloudy	Middle	3.0	26.70	26.70	26.70	8.00	8.00	7.98	27.76	27.76	27.76	76.4	77.3	76.3	5.23	5.30	5.22	2.32	2.30	2.22	2	2.00
	3:02		Middle	3.0	26.70	26.70		7.96	7.97		27.76	27.76		76.4	75.2		5.21	5.15		2.13	2.11		<2	
28/5/15	19:23	Cloudy	Middle	2.5	27.60	27.60	27.65	8.17	8.17	8.17	23.65	23.65	23.65	77.2	78.9	77.8	5.32	5.43	5.36	4.16	4.47	4.37	4	3.50
	19:24		Middle	2.5	27.70	27.70		8.16	8.16		23.64	23.64		78.0	77.1		5.38	5.31		4.38	4.45		3	
30/5/15	15:15	Fine	Middle	3.0	29.60	29.60	29.70	8.46	8.46	8.45	24.18	24.18	24.18	74.4	71.8	71.5	4.96	4.77	4.78	4.01	4.00	4.04	6	5.50
	15:17		Middle	3.0	29.80	29.80		8.43	8.43		24.18	24.18		71.0	68.9		4.71	4.66		3.99	4.15		5	

Remarks:
Due to the hoisting of Amber Rainstorm Warning Signal, the water quality monitoring on 11 May 2015 during ebb tide and 20 May 2015 during flood tide were cancelled.



**Water Monitoring Result at Culvert J - Reference Station
Mid-Ebb Tide**

Date	Time	Weather Condition	Sampling Depth		Water Temperature			pH			Salinity		DO Saturation		DO		Turbidity		Suspended Solids					
					°C		-		ppt		%		mg/L		NTU		mg/L							
					Value	Average	Value	Average	Value	Average	Value	Average	Value	Average	Value	Average	Value	Average	Value	Average				
2/5/15	10:40	Fine	Middle	3	25.50	25.50	25.55	8.13	8.13	8.14	31.97	31.97	31.96	84.8	86.1	85.9	5.82	5.91	5.89	1.87	1.96	2.00	5	4.50
	10:42		Middle	3	25.60	25.60		8.15	8.15		31.95	31.95		86.5	86.3		5.93	5.89		2.13	2.03		4	
4/5/15	11:15	Fine	Middle	3	26.90	26.90	27.00	8.11	8.11	8.12	30.79	30.79	30.79	68.4	69.5	69.2	4.72	4.79	4.78	1.37	1.37	1.42	<2	<2
	11:17		Middle	3	27.10	27.10		8.12	8.12		30.79	30.79		69.5	69.5		4.80	4.79		1.46	1.48		<2	
6/5/15	14:22	Sunny	Middle	4	26.30	26.30	26.40	8.16	8.16	8.17	30.91	30.91	30.89	59.3	59.0	58.6	4.01	4.00	3.97	3.28	3.26	3.26	5	4.50
	14:24		Middle	4	26.50	26.50		8.17	8.17		30.86	30.86		58.3	57.8		3.95	3.93		3.25	3.26		4	
8/5/15	14:24	Cloudy	Middle	4	26.80	26.80	26.80	8.11	8.11	8.12	29.42	29.42	29.37	55.3	54.6	54.7	3.75	3.70	3.71	3.98	3.99	3.99	4	4.50
	14:26		Middle	4	26.80	26.80		8.12	8.12		29.31	29.31		54.7	54.3		3.70	3.67		3.99	3.98		5	
11/5/15	-	Amber Rainstorm	Middle	-	-	-	#DIV/0!	-	-	#DIV/0!	-	-	#DIV/0!	-	-	#DIV/0!	-	-	#DIV/0!	-	-	#DIV/0!	-	#DIV/0!
	-		Middle	-	-	-		-	-		-	-		-	-		-	-		-	-		-	
13/5/15	20:15	Cloudy	Middle	3	25.80	25.80	25.80	8.21	8.21	8.20	27.35	27.35	27.36	67.3	68.6	68.2	4.69	4.78	4.75	7.97	7.66	7.69	5	5.00
	20:16		Middle	3	25.80	25.80		8.19	8.20		27.36	27.36		68.3	68.4		4.76	4.77		7.59	7.55		5	
15/5/15	11:15	Fine	Middle	3	27.20	27.20	27.30	8.10	8.10	8.10	28.96	28.96	28.96	56.0	57.8	57.6	3.77	3.89	3.88	4.88	4.84	4.89	4	4.50
	11:17		Middle	3	27.40	27.40		8.09	8.09		28.95	28.95		58.1	58.4		3.91	3.95		4.91	4.92		5	
18/5/15	13:55	Cloudy	Middle	3	27.00	27.00	27.15	8.04	8.04	8.02	28.98	28.98	28.97	64.3	64.2	64.2	4.35	4.35	4.34	8.79	8.81	8.80	11	11.50
	13:57		Middle	3	27.30	27.30		8.00	8.00		28.96	28.96		65.4	63.0		4.39	4.25		8.81	8.80		12	
20/5/15	13:25	Cloudy	Middle	3	27.00	27.00	27.05	8.08	8.08	8.08	26.18	26.18	26.19	64.5	65.0	64.9	4.43	4.50	4.45	6.83	6.74	6.75	4	5.00
	13:27		Middle	3	27.10	27.10		8.08	8.08		26.19	26.19		65.4	64.8		4.42	4.46		6.71	6.70		6	
22/5/15	14:30	Cloudy	Middle	3	24.60	24.60	24.65	8.19	8.19	8.20	28.78	28.78	28.80	60.7	60.7	61.1	4.27	4.27	4.31	7.36	7.35	7.29	5	5.50
	14:32		Middle	3	24.70	24.70		8.20	8.20		28.82	28.80		61.7	61.1		4.36	4.32		7.24	7.21		6	
26/5/15	16:35	Cloudy	Middle	3	26.30	26.30	26.30	8.21	8.21	8.20	18.60	18.60	18.61	68.7	68.0	67.6	4.99	4.96	4.92	8.07	8.07	8.09	4	4.00
	16:37		Middle	3	26.30	26.30		8.19	8.19		18.61	18.61		66.6	67.0		4.84	4.87		8.10	8.11		4	
28/5/15	8:35	Fine	Middle	3	27.10	27.10	27.20	8.13	8.13	8.14	25.20	25.20	25.20	68.8	68.8	68.8	4.75	4.75	4.75	2.47	3.00	2.92	<2	2.00
	8:37		Middle	3	27.30	27.30		8.15	8.15		25.20	25.20		68.5	69.0		4.72	4.76		3.11	3.11		2	
30/5/15	9:50	Fine	Middle	3	28.30	28.30	28.30	8.19	8.19	8.19	24.69	24.69	24.69	70.9	72.2	71.2	4.81	4.89	4.83	2.83	2.84	2.85	2	2.50
	9:52		Middle	3	28.30	28.30		8.19	8.19		24.69	24.69		71.0	70.8		4.81	4.80		2.85	2.87		3	

Remarks:
Due to the hoisting of Amber Rainstorm Warning Signal, the water quality monitoring on 11 May 2015 during ebb tide and 20 May 2015 during flood tide were cancelled.



**Water Monitoring Result at Culvert J - Reference Station
Mid-Flood Tide**

Date	Time	Weather Condition	Sampling Depth m	Water Temperature °C		pH		Salinity ppt		DO Saturation %		DO mg/L		Turbidity NTU		Suspended Solids mg/L								
				Value	Average	Value	Average	Value	Average	Value	Average	Value	Average	Value	Average	Value	Average							
1/6/15	16:51	Cloudy	Middle	3.5	27.40	27.40	27.45	8.31	8.31	8.33	27.04	27.04	27.02	57.7	61.5	59.4	3.92	4.18	4.04	4.42	4.39	4.37	5	4.00
	16:53		Middle	3.5	27.50	27.50		8.34	8.34		27.00	27.00		60.4	58.1		4.11	3.95		4.34	4.34		3	
3/6/15	20:32	Cloudy	Middle	2.5	27.10	27.10	27.10	8.18	8.18	8.17	25.84	25.84	25.84	61.6	61.4	61.5	4.24	4.23	4.23	5.05	5.02	4.95	5	5.00
	20:33		Middle	2.5	27.10	27.10		8.16	8.16		25.84	25.84		61.2	61.7		4.21	4.24		4.90	4.83		5	
5/6/15	21:30	Cloudy	Middle	3.0	26.70	26.70	26.75	8.10	8.10	8.09	27.23	27.23	27.23	61.4	61.8	61.4	4.23	4.26	4.23	6.50	6.44	6.38	7	6.50
	21:31		Middle	3.0	26.80	26.80		8.08	8.08		27.23	27.23		61.3	61.0		4.22	4.20		6.11	6.48		6	
8/6/15	9:15	Fine	Middle	3.0	27.20	27.20	27.30	8.10	8.10	8.10	26.75	26.75	26.75	56.3	57.5	57.6	3.84	3.93	3.93	4.68	4.68	4.68	4	3.50
	9:17		Middle	3.0	27.40	27.40		8.10	8.10		26.75	26.75		58.1	58.3		3.96	3.98		4.68	4.67		3	
10/6/15	11:45	Fine	Middle	2.5	28.70	28.70	28.80	8.23	8.23	8.25	26.61	26.61	26.61	71.8	72.4	71.2	4.78	4.81	4.73	4.32	4.29	4.21	5	6.00
	11:47		Middle	2.5	28.90	28.90		8.27	8.27		26.61	26.61		70.3	70.1		4.68	4.66		4.17	4.06		7	
12/6/15	14:44	Fine	Middle	3.5	28.70	28.70	28.80	8.23	8.23	8.23	27.32	27.32	27.33	51.1	51.1	49.9	3.39	3.38	3.31	3.77	3.76	3.75	3	3.50
	14:46		Middle	3.5	28.90	28.90		8.23	8.23		27.34	27.34		49.0	48.4		3.26	3.21		3.74	3.73		4	
15/6/15	18:30	Fine	Middle	2.5	27.20	27.20	27.45	8.20	8.20	8.22	28.26	28.26	28.26	69.7	70.2	69.8	4.69	4.72	4.69	3.22	3.23	3.23	6	5.50
	18:32		Middle	2.5	27.70	27.70		8.23	8.23		28.26	28.26		69.0	70.1		4.64	4.72		3.24	3.24		5	
17/6/15	21:34	Cloudy	Middle	3.0	28.20	28.20	28.25	8.18	8.18	8.18	27.21	27.21	27.21	83.7	84.9	83.5	5.60	5.68	5.59	7.28	7.31	7.29	6	6.50
	21:35		Middle	3.0	28.30	28.30		8.17	8.17		27.20	27.20		82.4	83.1		5.51	5.56		7.25	7.33		7	
19/6/15	23:03	Fine	Middle	2.5	27.00	27.00	26.98	8.11	8.11	8.09	24.67	24.67	24.67	44.0	44.2	43.9	3.06	3.08	3.05	6.01	5.96	6.13	8	7.00
	23:04		Middle	2.5	26.90	27.00		8.07	8.07		24.67	24.67		43.4	43.8		3.02	3.05		6.18	6.36		6	
22/6/15	10:05	Cloudy	Middle	3.0	27.30	27.30	27.35	8.37	8.37	8.36	21.03	21.03	21.03	43.3	43.2	43.1	3.05	3.04	3.04	8.51	8.49	8.48	7	7.00
	10:07		Middle	3.0	27.40	27.40		8.34	8.34		21.03	21.03		43.0	43.0		3.03	3.03		8.46	8.44		7	
25/6/15	0:57	Cloudy	Middle	2.5	27.80	27.80	27.80	8.27	8.27	8.27	21.99	21.99	22.00	71.6	72.3	71.5	4.97	5.02	4.97	3.97	3.52	3.60	3	4.00
	0:58		Middle	2.5	27.80	27.80		8.26	8.26		22.00	22.00		71.2	71.0		4.94	4.93		3.48	3.44		5	
27/6/15	0:14	Cloudy	Middle	2.5	28.20	28.20	28.25	8.38	8.38	8.39	23.42	23.42	23.42	82.6	85.7	84.1	5.65	5.85	5.75	3.48	3.57	3.61	7	7.00
	0:15		Middle	2.5	28.30	28.30		8.39	8.39		23.42	23.42		84.4	83.8		5.77	5.73		3.72	3.65		7	
29/6/15	16:20	Fine	Middle	3.5	29.40	29.40	29.60	8.39	8.39	8.33	19.51	19.51	19.50	74.0	74.3	74.2	5.06	5.07	5.07	10.73	10.34	10.39	11	12.00
	16:22		Middle	3.5	29.80	29.80		8.26	8.26		19.49	19.49		74.2	74.3		5.06	5.07		10.36	10.12		13	



**Water Monitoring Result at Culvert J - Reference Station
Mid-Ebb Tide**

Date	Time	Weather Condition	Sampling Depth		Water Temperature		pH			Salinity		DO Saturation		DO		Turbidity		Suspended Solids						
					°C		-			ppt		%		mg/L		NTU		mg/L						
					Value	Average	Value	Average	Value	Average	Value	Average	Value	Average	Value	Average	Value	Average	Value	Average				
1/6/15	10:37	Cloudy	Middle	4	27.60	27.60	27.55	8.24	8.24	8.25	25.29	25.29	25.29	53.0	52.3	52.0	3.63	3.57	3.56	8.07	8.07	8.15	4	4.00
	10:39		Middle	4	27.50	27.50		8.26	8.26		25.29	25.29		51.7	51.0		3.53	3.49		8.22	8.24		4	
3/6/15	10:35	Fine	Middle	4	28.10	28.10	28.15	8.01	8.01	8.01	22.43	22.43	22.43	50.4	51.2	51.3	3.48	3.53	3.54	9.04	9.04	9.02	5	5.00
	10:37		Middle	4	28.20	28.20		8.01	8.01		22.42	22.42		51.7	51.8		3.56	3.57		9.00	9.00		5	
5/6/15	11:25	Cloudy	Middle	4	27.40	27.40	27.55	8.15	8.15	8.15	30.22	30.22	30.21	56.1	57.4	56.8	3.71	3.82	3.77	3.49	3.51	3.51	6	5.50
	11:27		Middle	4	27.70	27.70		8.15	8.15		30.20	30.20		56.9	56.9		3.78	3.78		3.51	3.51		5	
8/6/15	16:30	Fine	Middle	4	28.10	28.10	28.20	8.19	8.19	8.19	28.07	28.07	28.04	67.7	67.0	66.7	4.51	4.47	4.46	4.82	4.77	4.79	5	4.50
	16:32		Middle	4	28.30	28.30		8.18	8.18		28.00	28.00		68.0	64.0		4.60	4.27		4.77	4.80		4	
10/6/15	16:40	Fine	Middle	4	27.80	27.80	27.85	8.30	8.30	8.31	22.33	22.33	22.23	60.7	60.2	60.0	4.21	4.17	4.16	8.81	8.81	8.79	6	6.50
	16:42		Middle	4	27.90	27.90		8.31	8.31		22.13	22.13		59.6	59.4		4.13	4.12		8.77	8.77		7	
12/6/15	8:35	Fine	Middle	3	27.80	27.80	27.80	8.24	8.24	8.24	22.51	22.51	22.51	69.2	69.7	69.8	4.80	4.83	4.84	8.29	8.31	8.26	6	5.50
	8:37		Middle	3	27.80	27.80		8.24	8.24		22.51	22.51		70.0	70.2		4.85	4.86		8.28	8.16		5	
15/6/15	10:40	Fine	Middle	3	27.70	27.70	27.80	8.21	8.21	8.22	26.81	26.81	26.81	69.7	71.7	70.4	4.72	4.85	4.76	4.19	4.29	4.32	4	4.50
	10:42		Middle	3	27.90	27.90		8.22	8.22		26.81	26.81		70.0	70.0		4.73	4.73		4.33	4.48		5	
17/6/15	11:37	Fine	Middle	4	27.50	27.50	27.60	8.23	8.23	8.18	26.30	26.30	26.30	54.7	54.8	54.8	3.72	3.73	3.72	6.61	6.61	6.57	6	6.50
	11:39		Middle	4	27.70	27.70		8.13	8.13		26.29	26.29		54.9	54.9		3.74	3.70		6.54	6.50		7	
19/6/15	16:05	Fine	Middle	4	29.60	29.60	29.85	8.16	8.16	8.15	26.77	26.77	26.72	50.2	49.3	49.6	3.29	3.23	3.25	7.97	8.07	7.97	4	4.00
	16:07		Middle	4	30.10	30.10		8.14	8.14		26.67	26.67		49.5	49.4		3.24	3.23		8.31	7.51		4	
22/6/15	15:48	Fine	Middle	4	28.40	28.40	28.35	8.49	8.49	8.47	22.30	22.30	22.29	67.3	65.6	65.4	4.63	4.51	4.50	5.63	5.37	5.38	8	8.00
	15:50		Middle	4	28.30	28.30		8.45	8.45		22.28	22.28		64.7	63.8		4.45	4.39		5.22	5.28		8	
24/6/15	15:30	Cloudy	Middle	3	28.40	28.40	28.45	8.36	8.36	8.39	25.11	25.11	25.11	85.4	83.7	82.9	5.77	5.65	5.60	1.88	1.89	1.88	3	3.50
	15:32		Middle	3	28.50	28.50		8.42	8.42		25.10	25.10		81.6	80.8		5.51	5.46		1.88	1.87		4	
26/6/15	21:38	Cloudy	Middle	3	28.20	28.20	28.20	8.29	8.29	8.26	20.44	20.44	20.45	70.9	70.5	70.1	4.93	4.90	4.87	3.16	3.14	3.11	10	9.00
	21:39		Middle	3	28.20	28.20		8.23	8.23		20.46	20.46		69.7	69.1		4.85	4.81		3.07	3.05		8	
29/6/15	11:15	Fine	Middle	3	29.70	29.70	29.80	8.31	8.31	8.31	22.48	22.48	22.48	78.6	80.8	80.2	5.26	5.42	5.38	4.83	4.83	4.84	9	8.50
	11:17		Middle	3	29.90	29.90		8.31	8.31		22.48	22.48		81.0	80.4		5.45	5.38		4.83	4.87		8	



**Water Monitoring Result at Culvert J - Reference Station
Mid-Flood Tide**

Date	Time	Weather Condition	Sampling Depth		Water Temperature			pH			Salinity			DO Saturation		DO		Turbidity		Suspended Solids				
			m		°C		-		ppt		%		mg/L		NTU		mg/L							
					Value	Average	Value	Average	Value	Average	Value	Average	Value	Average	Value	Average	Value	Average						
2/7/15	19:51	Fine	Middle	2.5	28.20	28.20	28.20	8.27	8.27	8.27	23.73	23.73	23.73	67.1	68.2	67.1	4.59	4.67	4.59	6.85	6.95	6.99	6	6.50
	19:52		Middle	2.5	28.20	28.20		8.27	8.27		23.73	23.73		67.3	65.8		4.60	4.50		7.05	7.11		7	
4/7/15	21:09	Fine	Middle	2.5	27.90	27.90	27.93	8.18	8.18	8.18	27.23	27.23	27.24	64.0	66.0	63.8	4.31	4.44	4.29	5.52	5.56	5.52	3	3.00
	21:10		Middle	2.5	28.00	27.90		8.18	8.18		27.24	27.24		62.1	63.1		4.18	4.24		5.59	5.42		3	
6/7/15	1:01	Cloudy	Middle	3.0	26.24	26.24	26.28	7.54	7.54	7.54	25.94	25.94	25.95	80.6	78.0	78.3	5.62	5.44	5.46	5.19	5.05	5.18	2	2.00
	1:02		Middle	3.0	26.32	26.32		7.53	7.53		25.95	25.95		77.5	77.1		5.41	5.38		5.16	5.33		2	
8/7/15	10:08	Fine	Middle	3.5	26.60	26.60	26.65	8.19	8.19	8.20	31.67	31.67	31.66	79.5	78.4	76.1	5.33	5.26	5.11	4.82	4.82	4.82	6	5.50
	10:10		Middle	3.5	26.70	26.70		8.20	8.20		31.64	31.64		74.5	72.1		5.00	4.84		4.82	4.83		5	
10/7/15	13:38	Fine	Middle	3.5	27.60	27.60	27.85	8.22	8.22	8.22	32.02	32.02	32.01	83.5	81.3	81.1	5.48	5.33	5.31	4.05	4.17	3.99	6	6.00
	13:40		Middle	3.5	28.10	28.10		8.22	8.22		32.00	32.00		79.9	79.5		5.23	5.21		4.00	3.75		6	
13/7/15	16:25	Fine	Middle	3.0	28.40	28.40	28.55	8.19	8.19	8.19	30.44	30.44	30.44	67.4	68.0	65.9	4.41	4.45	4.31	7.75	7.72	7.56	5	5.00
	16:27		Middle	3.0	28.70	28.70		8.19	8.19		30.43	30.43		66.0	62.2		4.32	4.07		7.36	7.40		5	
15/7/15	20:30	Cloudy	Middle	3.0	27.64	27.64	27.65	7.58	7.58	7.58	28.99	28.99	28.99	77.6	77.4	77.2	5.20	5.18	5.17	6.92	6.33	6.54	5	5.50
	20:31		Middle	3.0	27.66	27.66		7.58	7.58		28.98	28.98		77.0	76.6		5.16	5.13		6.78	6.12		6	
17/7/15	20:42	Cloudy	Middle	2.5	27.50	27.50	27.51	7.58	7.58	7.58	27.70	27.70	27.70	78.0	78.2	78.1	5.28	5.29	5.28	6.85	6.91	6.84	6	6.50
	20:43		Middle	2.5	27.52	27.52		7.57	7.57		27.70	27.70		77.9	78.2		5.26	5.29		6.97	6.63		7	
20/7/15	8:11	Cloudy	Middle	3.5	27.30	27.30	27.35	8.17	8.17	8.16	28.04	28.04	28.04	69.8	69.2	67.7	4.73	4.68	4.58	6.17	6.19	6.27	6	6.50
	8:13		Middle	3.5	27.40	27.40		8.14	8.14		28.03	28.03		65.4	66.4		4.43	4.49		6.28	6.42		7	
22/7/15	-	Amber Rainstorm	Middle	-	-	-	#DIV/0!	-	-	#DIV/0!	-	-	#DIV/0!	-	-	#DIV/0!	-	-	#DIV/0!	-	-	#DIV/0!	-	#DIV/0!
	-		Middle	-	-	-		-	-		-	-		-	-		-	-		-	-		-	
25/7/15	3:26	Cloudy	Middle	3.0	27.00	27.00	27.02	7.61	7.61	7.61	19.38	19.38	19.38	88.2	88.0	88.0	6.30	6.29	6.28	3.28	3.19	3.22	4	4.00
	3:27		Middle	3.0	27.04	27.04		7.60	7.60		19.37	19.38		88.0	87.8		6.28	6.26		3.16	3.24		4	
28/7/15	15:44	Fine	Middle	3.5	29.20	29.20	29.40	8.20	8.20	8.20	25.14	25.14	25.07	72.2	71.4	70.9	4.81	4.75	4.72	3.77	7.76	4.77	4	4.50
	15:46		Middle	3.5	29.60	29.60		8.20	8.20		25.00	25.00		70.5	69.3		4.70	4.63		3.75	3.80		5	
30/7/15	16:27	Cloudy	Middle	3.5	27.50	27.50	27.50	8.30	8.30	8.30	23.39	23.39	23.39	73.8	73.6	73.3	5.11	5.09	5.07	9.17	9.21	9.17	9	9.50
	16:29		Middle	3.5	27.50	27.50		8.30	8.30		23.39	23.39		73.3	72.4		5.07	5.00		9.18	9.13		10	

Remarks:

Due to the hoisting of Amber Rainstorm Warning Signal, the water quality monitoring event in 22 July 2015 during flood tide and ebb tide were cancelled.



**Water Monitoring Result at Culvert J - Reference Station
Mid-Ebb Tide**

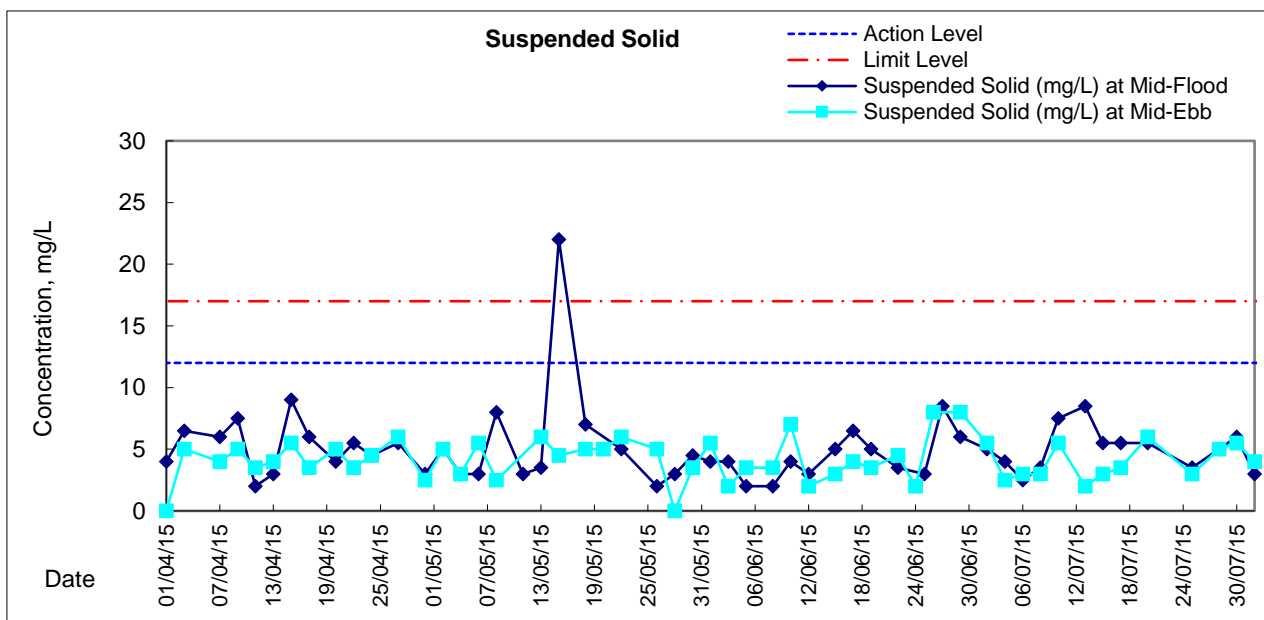
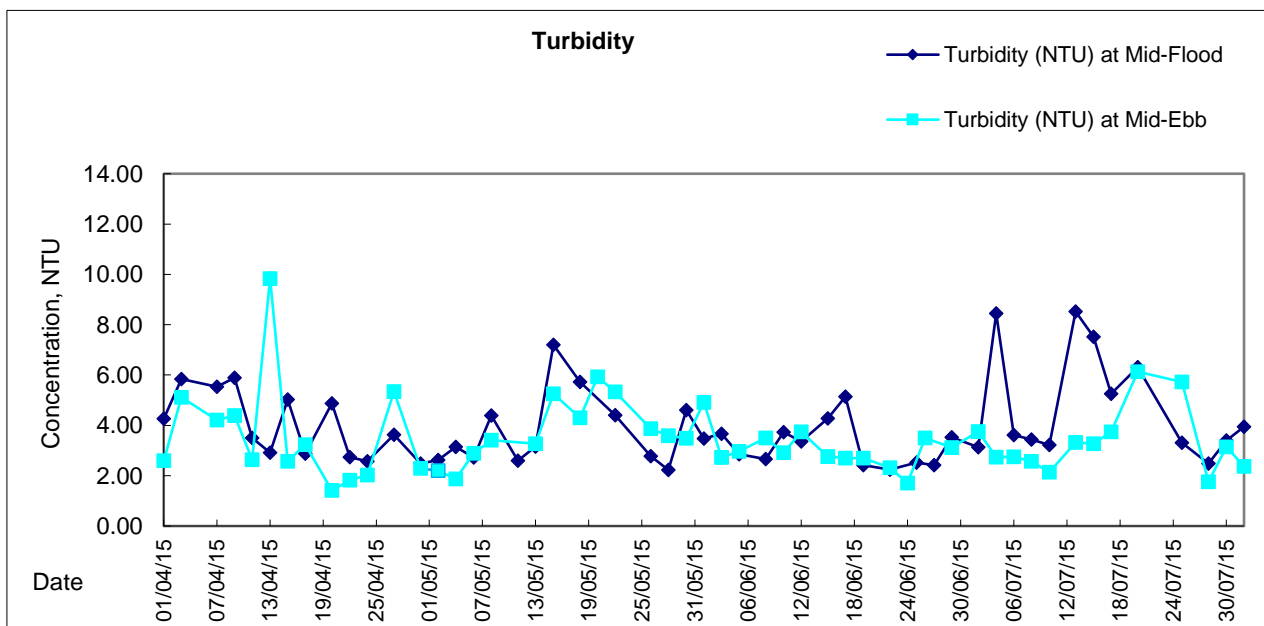
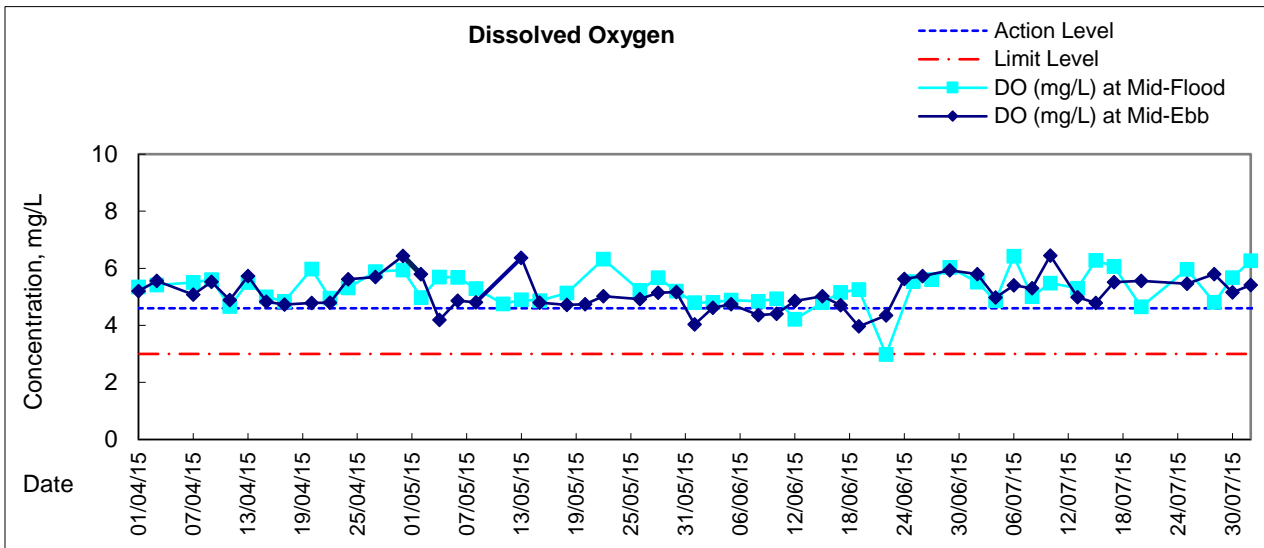
Date	Time	Weater Condition	Sampling Depth		Water Temperature		pH		Salinity		DO Saturation		DO		Turbidity		Suspended Solids							
					°C		-		ppt		%		mg/L		NTU		mg/L							
					Value	Average	Value	Average	Value	Average	Value	Average	Value	Average	Value	Average	Value	Average						
2/7/15	11:30	Fine	Middle	3	29.60	29.60	29.70	8.24	8.24	8.24	23.36	23.36	23.36	76.2	77.1	76.4	5.09	5.15	5.11	7.16	7.35	7.30	6	7.00
	11:32		Middle	3	29.80	29.80		8.24	8.24		23.35	23.35		75.8	76.4		5.08	5.10		7.42	7.27		8	
4/7/15	15:04	Fine	Middle	4	28.90	28.90	28.60	8.00	8.00	8.00	24.22	24.22	24.15	42.9	40.9	41.0	2.89	2.75	2.76	9.90	9.92	9.91	9	9.00
	15:05		Middle	4	28.30	28.30		8.00	8.00		24.08	24.08		40.1	40.1		2.69	2.69		9.95	9.85		9	
6/7/15	13:47	Fine	Middle	4	28.40	28.40	28.55	8.07	8.07	8.05	24.43	24.43	24.41	53.7	54.6	53.5	3.64	3.70	3.62	10.37	10.07	10.09	4	4.00
	13:49		Middle	4	28.70	28.70		8.03	8.03		24.39	24.39		53.2	52.3		3.60	3.54		9.97	9.96		4	
8/7/15	16:29	Fine	Middle	4	27.50	27.50	27.60	8.15	8.15	8.13	27.22	27.22	27.19	58.9	58.3	58.3	3.89	3.94	3.92	10.63	10.53	10.48	6	6.00
	16:31		Middle	4	27.70	27.70		8.11	8.11		27.16	27.16		58.2	57.8		3.94	3.91		10.31	10.43		6	
10/7/15	20:25	Cloudy	Middle	3	26.34	26.35	26.36	7.71	7.71	7.71	30.26	30.26	30.26	91.4	91.6	91.3	6.21	6.22	6.19	2.53	2.64	2.47	6	6.50
	20:26		Middle	3	26.38	26.38		7.71	7.71		30.25	30.25		91.2	91.0		6.18	6.15		2.36	2.34		7	
13/7/15	9:48	Fine	Middle	4	28.00	28.00	28.15	8.17	8.17	8.16	30.29	30.29	30.25	61.6	65.5	63.9	4.07	4.32	4.22	3.74	3.74	3.78	3	2.50
	9:50		Middle	4	28.30	28.30		8.15	8.15		30.21	30.21		65.5	63.0		4.32	4.16		3.79	3.83		2	
15/7/15	10:50	Fine	Middle	4	28.40	28.40	28.40	8.20	8.20	8.21	31.43	31.43	31.38	65.3	66.4	64.8	4.27	4.33	4.23	3.87	3.95	4.03	2	3.00
	10:52		Middle	4	28.40	28.40		8.21	8.21		31.33	31.33		65.2	62.4		4.25	4.06		4.14	4.15		4	
17/7/15	12:10	Fine	Middle	4	27.60	27.60	27.75	8.22	8.22	8.22	30.39	30.39	30.40	77.4	76.0	76.4	5.13	5.04	5.05	4.20	4.06	4.07	3	3.50
	12:12		Middle	4	27.90	27.90		8.22	8.22		30.41	30.41		75.4	76.8		4.94	5.09		4.03	4.00		4	
20/7/15	13:45	Cloudy	Middle	3	26.80	26.80	26.80	8.26	8.26	8.26	29.72	29.72	29.73	77.2	75.6	76.1	5.22	5.16	5.18	6.87	6.73	6.75	6	7.00
	13:47		Middle	3	26.80	26.80		8.26	8.26		29.73	29.73		75.4	76.0		5.14	5.18		6.71	6.70		8	
22/7/15	-	Amber Rainstorm	Middle	-	-	-	#DIV/0!	-	-	#DIV/0!	-	-	#DIV/0!	-	-	#DIV/0!	-	-	#DIV/0!	-	-	#DIV/0!	-	#DIV/0!
	-		Middle	-	-	-		-	-		-	-		-	-		-	-		-	-		-	
25/7/15	7:53	Cloudy	Middle	4	27.20	27.20	27.20	7.97	7.97	7.97	24.16	24.16	24.24	75.9	71.5	73.6	5.26	4.95	5.09	3.03	2.88	2.96	<2	<2
	7:55		Middle	4	27.20	27.20		7.97	7.97		24.32	24.32		73.5	73.3		5.09	5.07		2.96	2.96		<2	
28/7/15	10:05	Fine	Middle	3	28.10	28.10	27.40	8.11	8.11	8.11	25.70	25.70	25.70	78.5	78.7	78.1	5.31	5.33	5.29	1.64	1.64	1.64	4	4.00
	10:07		Middle	3	25.20	28.20		8.11	8.11		25.70	25.70		77.7	77.6		5.25	5.26		1.64	1.65		4	
30/7/15	10:27	Fine	Middle	4	27.40	27.40	27.50	8.22	8.22	8.21	21.83	21.83	21.82	66.0	65.3	65.4	4.02	4.06	4.05	7.19	7.43	7.32	7	6.50
	10:29		Middle	4	27.60	27.60		8.19	8.19		21.81	21.81		65.1	65.1		4.05	4.05		7.45	7.21		6	

Remarks:

Due to the hoisting of Amber Rainstorm Warning Signal, the water quality monitoring event in 22 July 2015 during flood tide and ebb tide were cancelled.



Graphic Presentation of Water Quality Result of M5B - Central Cooling Water Intake Groups



The construction work during the reporting period include, removal of L-shaped wall, installation of caisson seawall, construction of ELS, installation of pipe pile wall, roadworks, drainage works and P1 Road Paving. The weather condition during the reporting period ranges from mostly sunny to cloudy. The quarterly mean of suspended solids in this reporting quarter was found to be 4.5 mg/L which was lower than ambient mean of 7.5 mg/L according to the baseline monitoring data.



Graphic Presentation of Water Quality Result of Culvert J - Reference Station

